



Don't forget your  
GROWTH MINDSET

## YEAR 3 ISOLATION HOMEWORK



### MATHS TASKS

Day 9—<https://vimeo.com/556159257>

Day 10—<https://vimeo.com/556159306>

can't wait  
to see you  
again!

Please see the attached sheets to accompany these lessons.



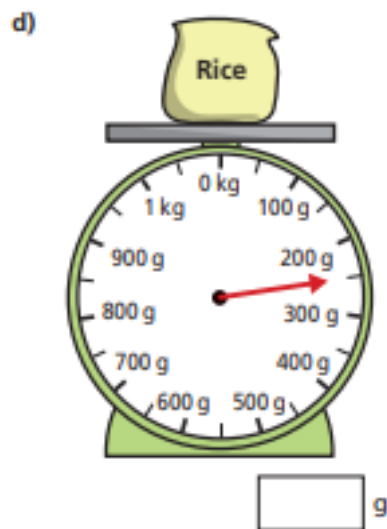
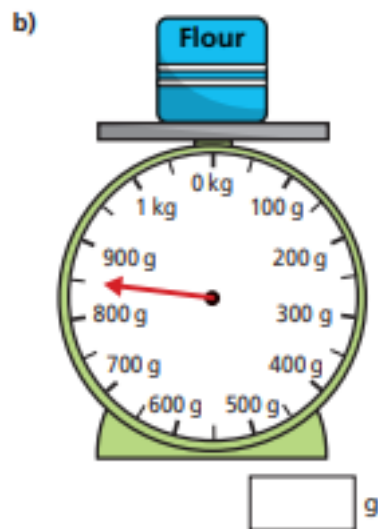
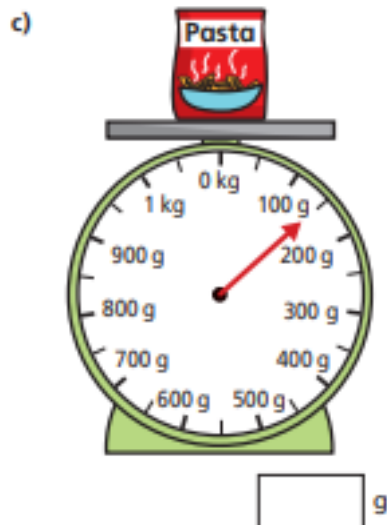
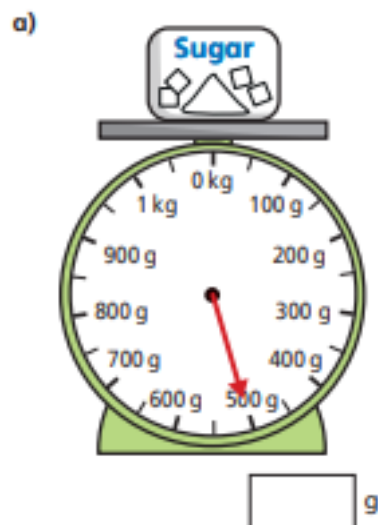
#### **Every day you MUST:**

- Read your book
- Practise spellings from your year group list
- Practice your handwriting
- Practise your number bonds/ timetables/ counting etc
- Keep fit and healthy!

**KEEP UP THE GREAT LEARNING!**

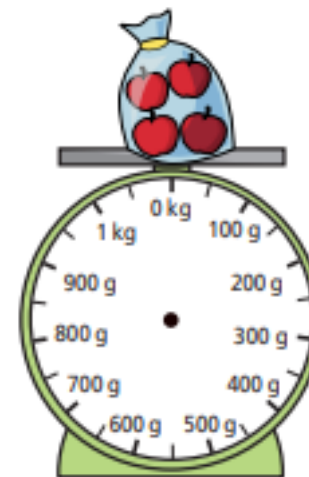
Measure mass (1)

1 What is the mass of each object?

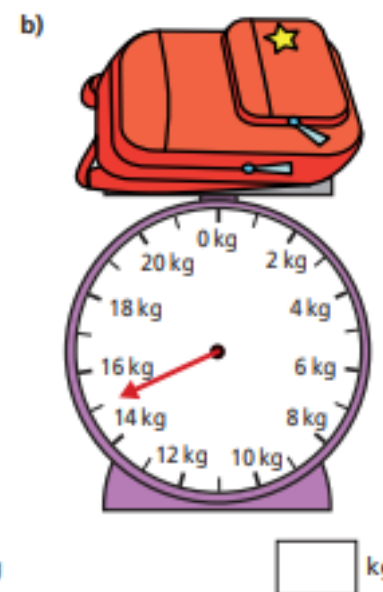


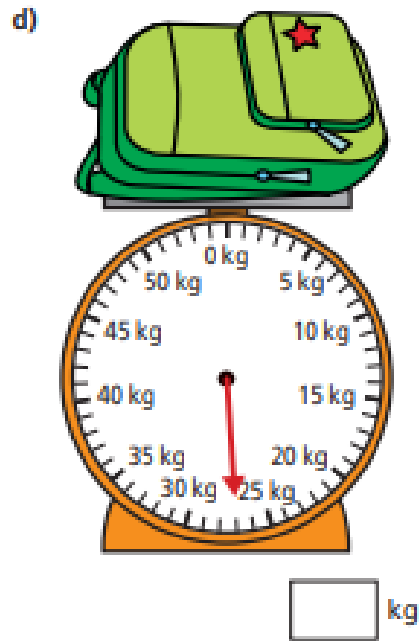
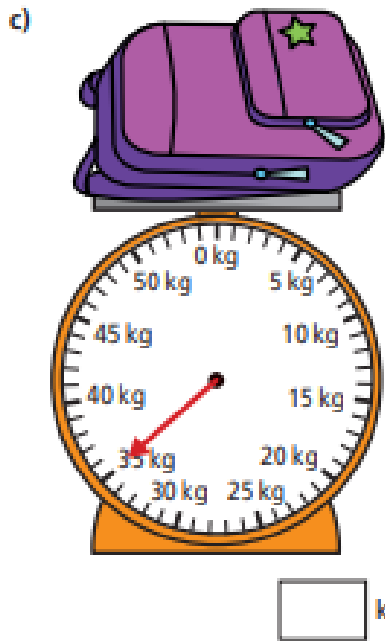
2 Tom weighs some apples.  
The apples weigh 650 g in total.

Draw an arrow on the scales to show the weight of the apples.

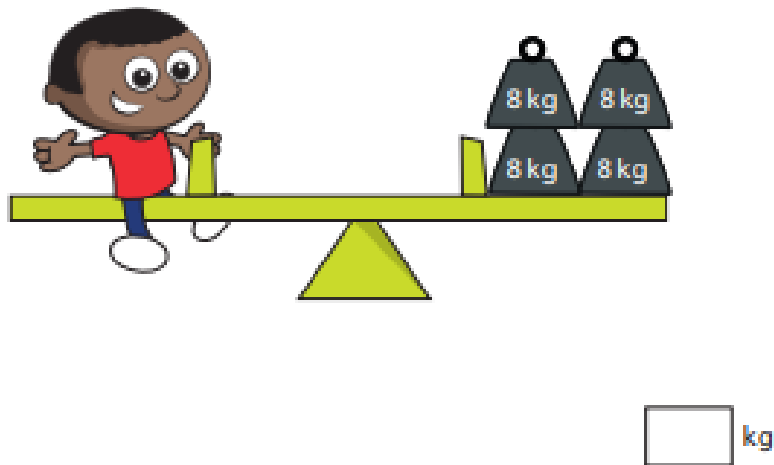


3 What is the mass of each bag?

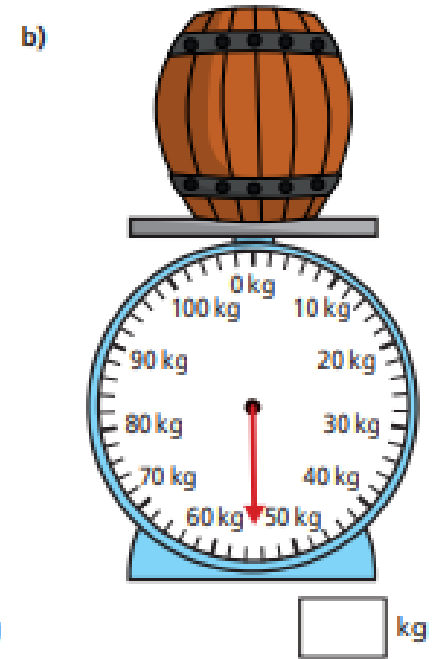
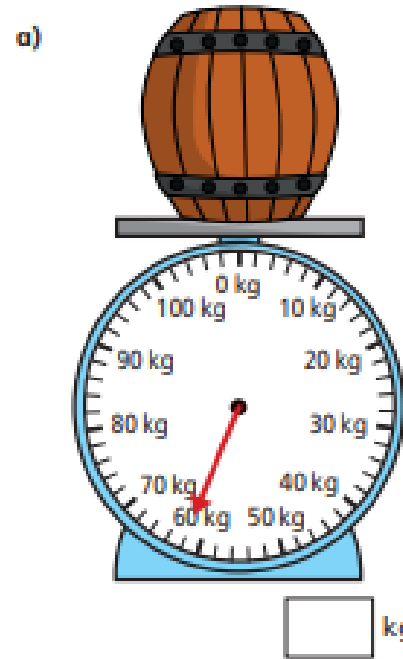




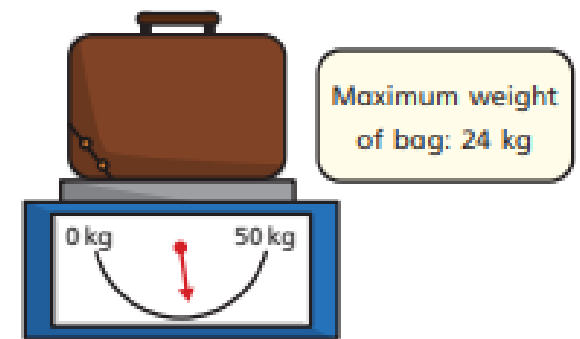
4 How many kilograms does Mo weigh?



5 What is the mass of each barrel?



6 The Khan family is going on holiday.  
Their luggage is weighed at the airport.

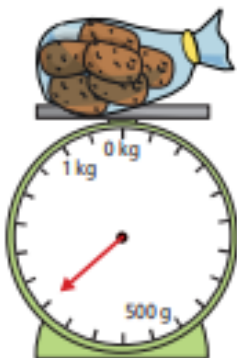


Can the family take this suitcase with them? \_\_\_\_\_  
Why do you think this?

## Measure mass (2)

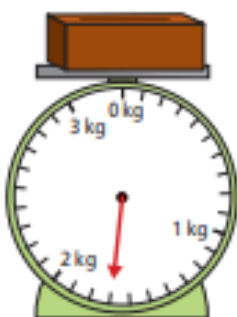
1 What is the mass of each object?

a)



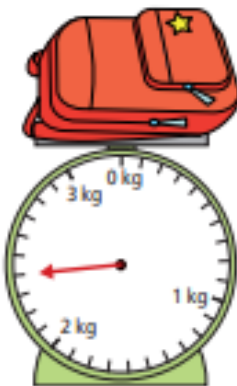
g

b)



kg and  g

c)



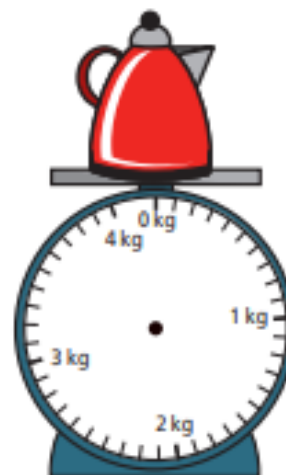
kg and  g

2 The mass of each object is shown on the label.

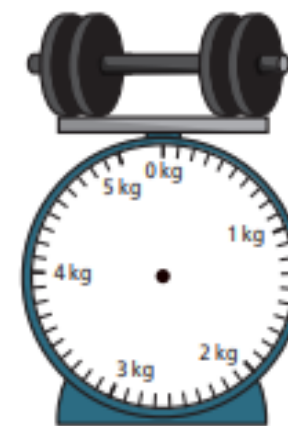


Draw on the scales to show the mass of each object.

a)



b)



c)



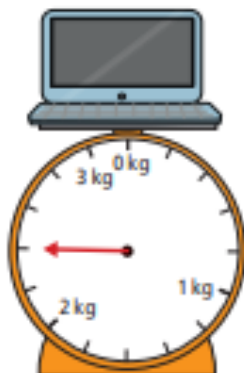
3 What is the mass of each object?

a)



g

b)



kg and  g

c)

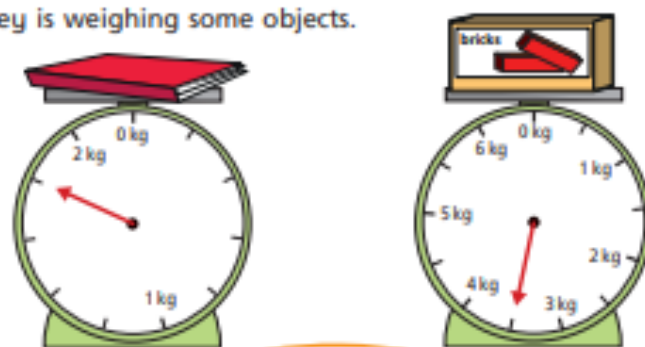


kg and  g

How did you work out what each interval on the scales represents?



4 Whitney is weighing some objects.



The book weighs more than the toy bricks because the arrow goes further round.

Do you agree with Whitney? \_\_\_\_\_

Why?

5 Amir and Annie each have a present.

They are working out the mass of their presents using weights.



Our presents weigh the same.

Amir



No they do not. Mine is heavier because it weighs more than one kilogram.

Annie



Who is correct? \_\_\_\_\_

How do you know?